

CERTIFIED LAND CORNER RECORDATION

DESCRIPTION OF CORNER EVIDENCE FOUND, AND ORIGINAL RECORD (If known)

LOCATION Found a 1/2" dia. x 29" long iron pipe, in place. Set by Malcolm D. Martin, former Laramie County Surveyor. Accepted pipe as corner monument.
 S. 2 S. 1
 S.11 S.12
 T.13N., R.66W. G.L.O. record - Unknown.
 6th P.M.

DESCRIPTION OF MONUMENT AND ACCESSORIES ESTABLISHED TO PERPETUATE THE ORIGINAL LOCATION OF THIS CORNER:

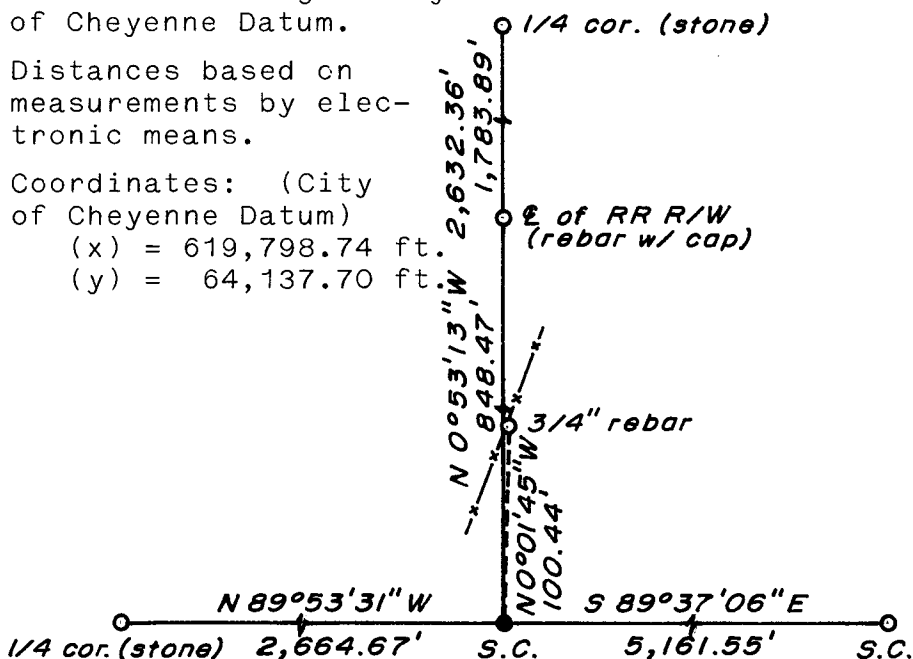
At the corner: Set a 5/8" dia. x 24" long rebar with 2" dia. aluminum cap.
 Accessories: Set a 2" x 2" x 24" Pine post, painted red over white, one foot northwest of corner monument. Left pipe as memorial.
 A 3/4" dia. rebar, origin unknown, bears N 0°01'45" W, 100.44 feet distant. (Not on section line)

SKETCH, WITH COURSE AND DISTANCE TO ADJACENT CORNER IF DETERMINED IN THIS SURVEY.
 (May Sketch or Paste Reproduction on Reverse Side.)

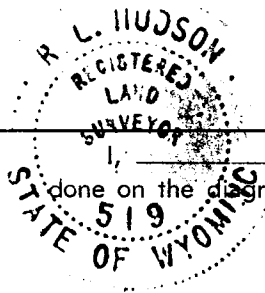
Basis of Bearing: City of Cheyenne Datum.

Distances based on measurements by electronic means.

Coordinates: (City of Cheyenne Datum)
 (x) = 619,798.74 ft.
 (y) = 64,137.70 ft.



Aluminum cap stamped:
 T.13N. R.66W.
 S.C.
 S. 2 S. 1
 S.11 S.12
 LS 519 1978



I, R. L. Hudson certify that I have carefully performed ~~or reviewed~~ the work done on the diagrammed corner as reported on this recordation form and approve the same.

R. L. Hudson Wyoming L.S. No. 519
 Signature of Surveyor Registration No.

STATE OF WYOMING,
 Office of Clerk and Recorder,
 County of Laramie

511164

This "corner record" was filed for record on the 21 day of December, 1978, was noted on the cross-index plat and is assigned page No. _____, in book No. _____.

James C Whitehead
 County Official

Cross Index No.	T. _____	R. _____	Mer.
	<u>E-21</u>	<u>13</u>	<u>66</u>
	T. _____	R. _____	Mer.
	T. _____	R. _____	Mer.
	T. _____	R. _____	Mer.
	T. _____	R. _____	Mer.
	T. _____	R. _____	Mer.